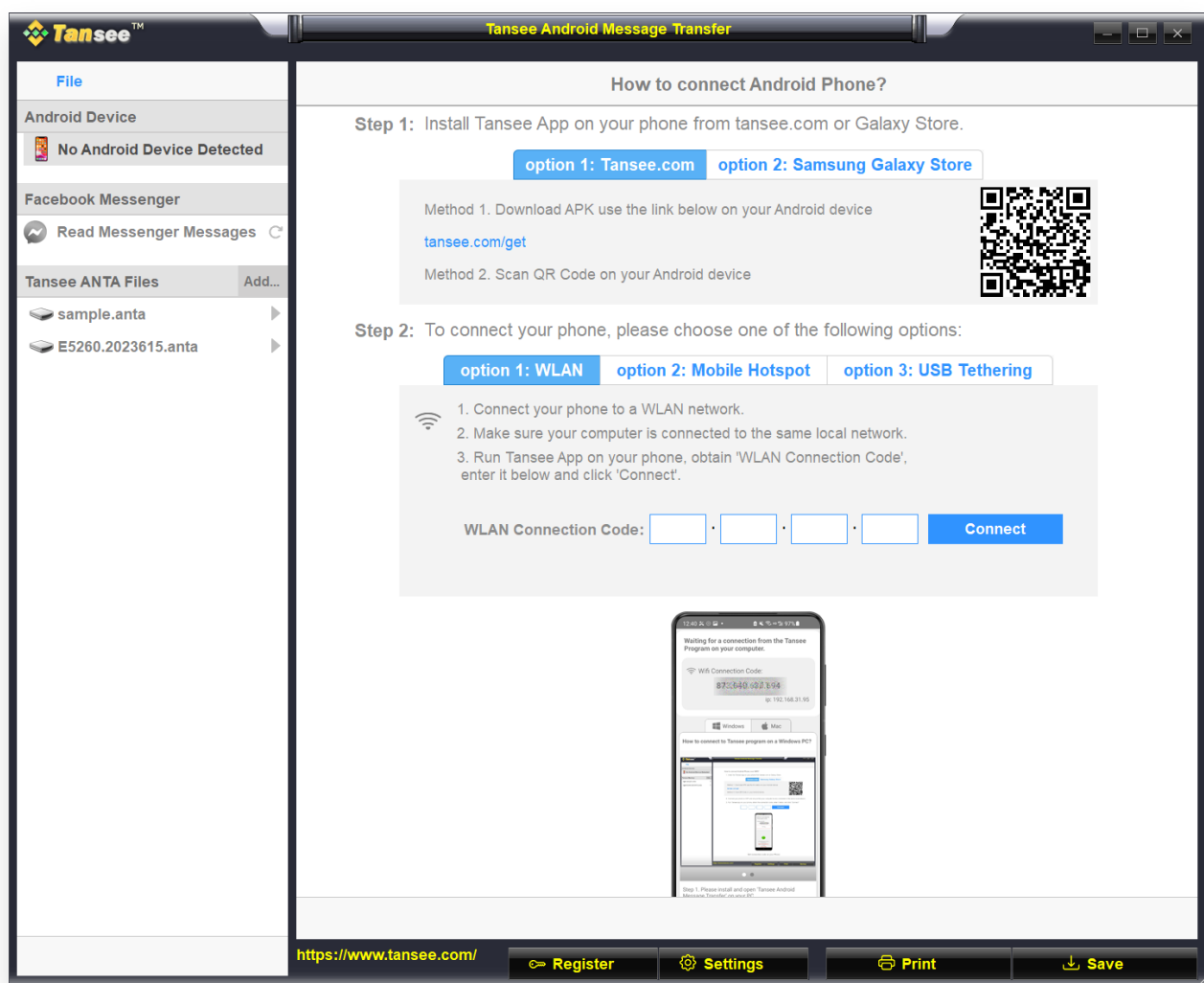


# How to Transfer Text Messages from Samsung Phone to PC?

## 1 On your windows computer:

Download and install the latest version of Tansee Android Message Transfer from [here](https://www.tansee.com).

Open Tansee Android Message Transfer.



## 2 On your android phone:

Download and install Tansee Message Transfer App from **[tansee.com/get](https://www.tansee.com/get)** (Please open this link in your Android phone's web browser)

Open Tansee Message Transfer App.

Connect your phone to the PC using one of the following options:

**Option 1: WLAN** Please ensure that your phone and the computer are

connected to the same WLAN Network (same router).

**Option 2: Mobile Hotspot** Connect your computer's WiFi to the **Mobile Hotspot** network of your phone.

**Option 3: USB Tethering** Connect your computer's network with the **USB Tethering** network of your phone via a USB cable.

Obtain the connection code from one of the options above, input it into the Tansee program on your PC, and click the **Connect** button.

② [What to do if 'Tansee Android Message Transfer' cannot connect to My Android device?](#)

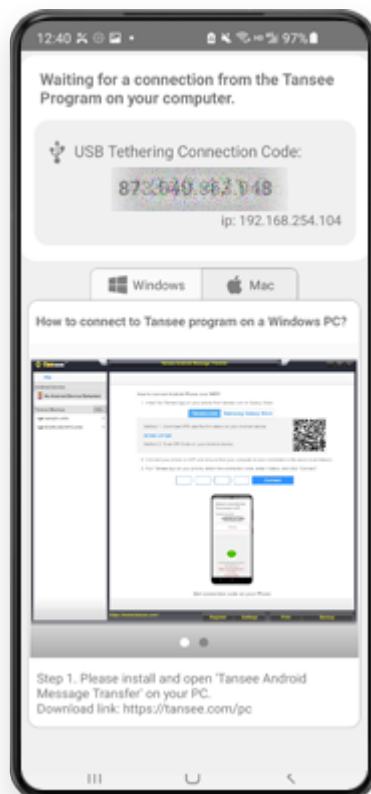
② [What to do if the USB tethering or Mobile hotspot option is greyed out on Android?](#)



Option 1: Obtain WLAN Connection Code from Tansee App

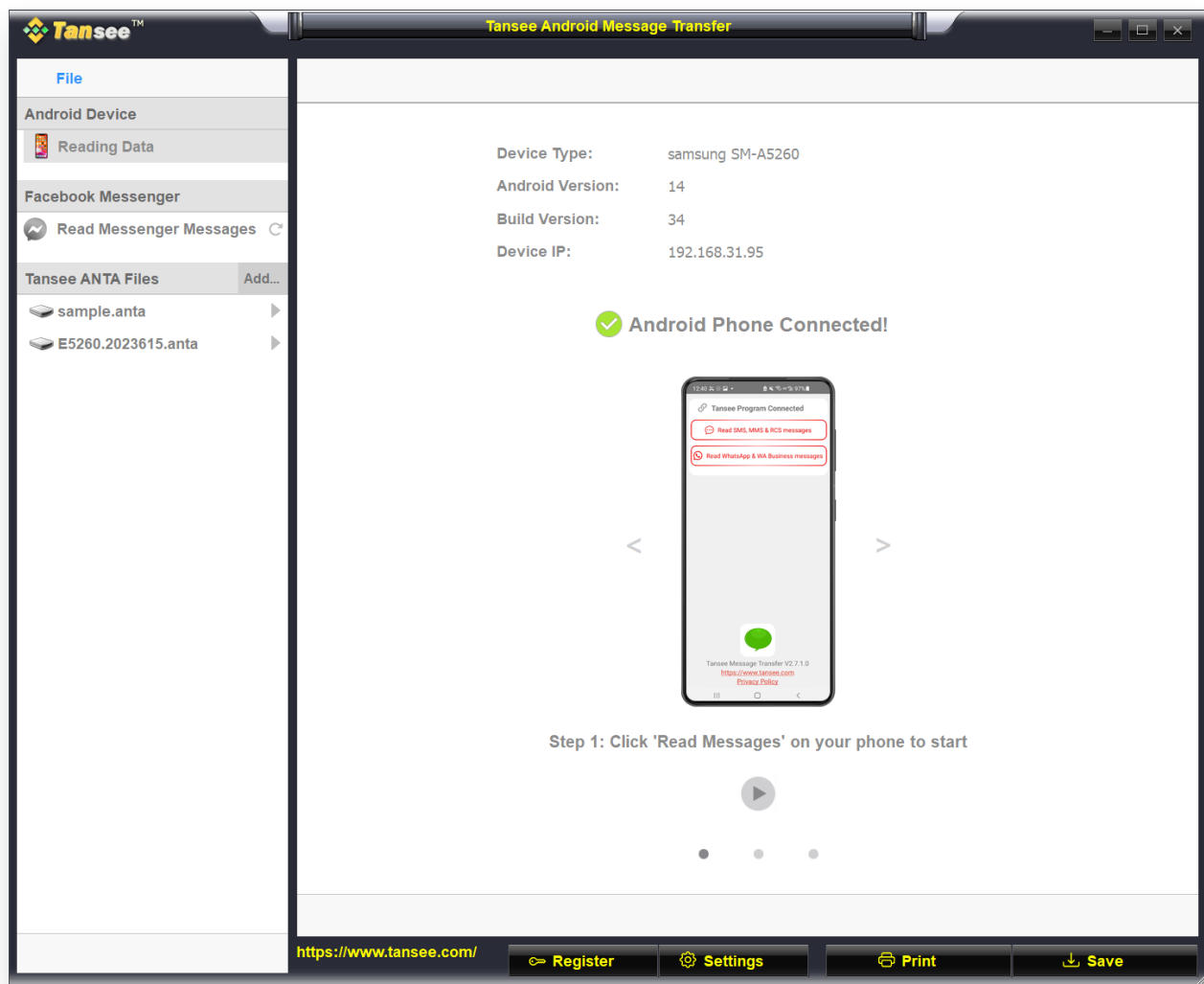


Option 2: Obtain Mobile Hotspot Connection Code from Tansee App



Option 3: Obtain USB Tethering Connection Code from Tansee App

**Tips:** Tansee can automatically detect and connect your Android phone if your phone and the computer are connected to the same WIFI Network.



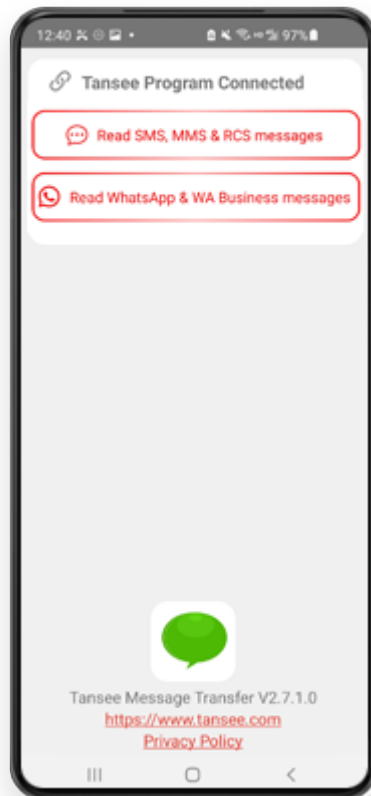
### 3 Read messages:

While your android phone is connected to your PC, please click 'Read SMS, MMS & RCS messages' on your Android Phone.

Or click 'Read WhatsApp messages & WA Business messages'.

➔ [How to Transfer Whatsapp Messages from Android Phone to PC?](#)

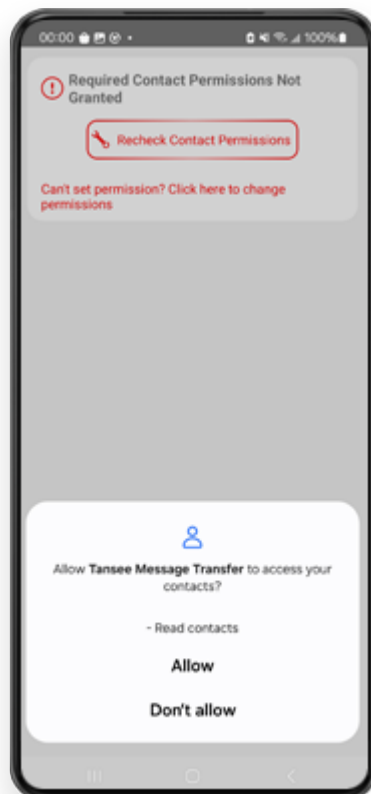
➔ [How to Transfer Facebook Messenger Messages to PC?](#)



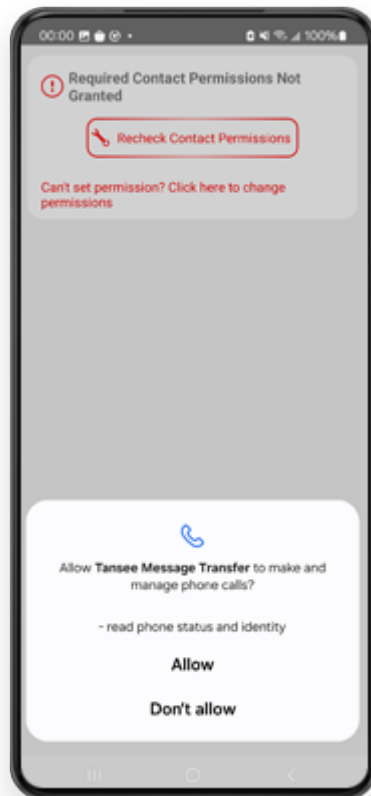
4

#### **Grant permissions to Tansee App and set Tansee Message Transfer as your default SMS app.**

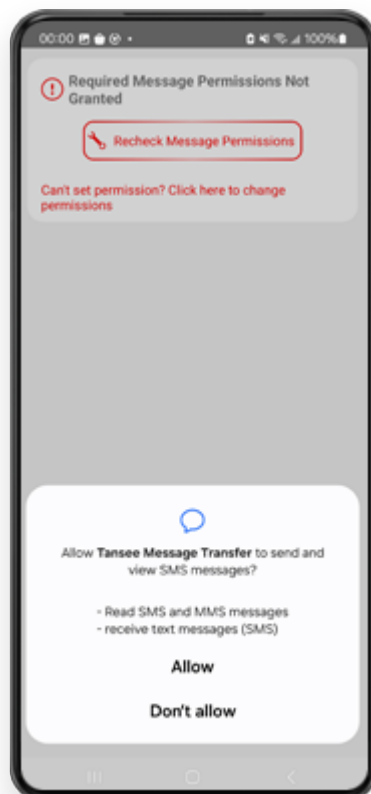
Note: 'Set as default SMS App' is required to read all messages. Once the reading is done, you will receive a prompt to set it back.



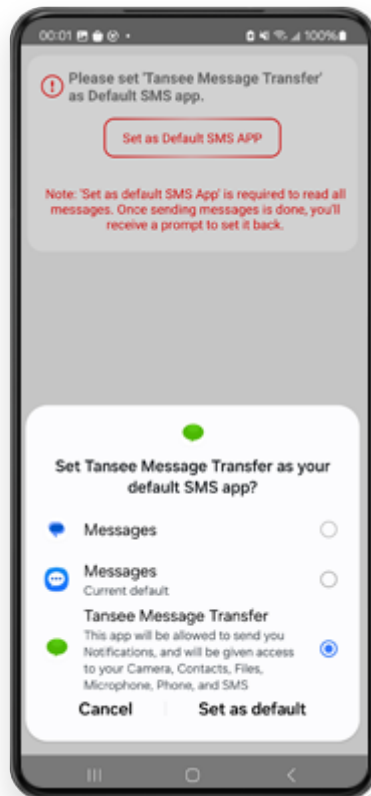
Allow permission: READ\_CONTACTS



Allow permission: READ\_PHONE\_STATE



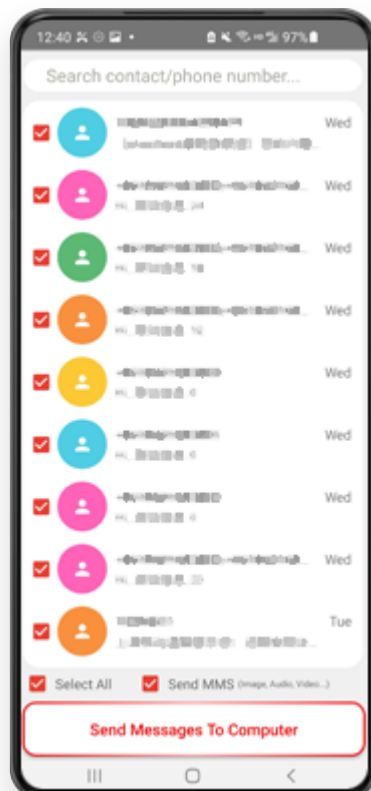
Allow permission: READ\_SMS



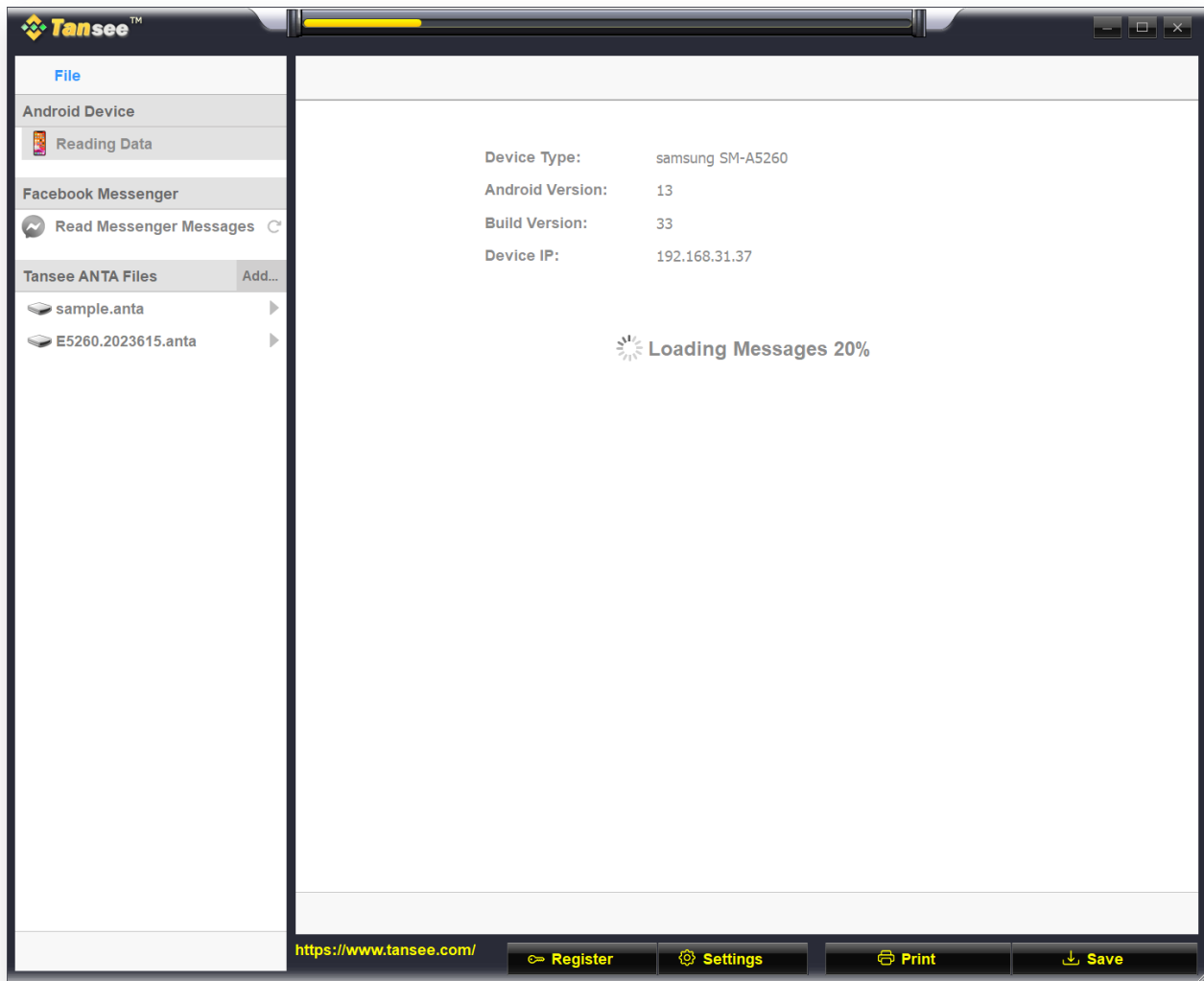
Set Tansee Message Transfer as your default SMS app

## 5 Choose messages, and click 'Send Messages To Computer'.

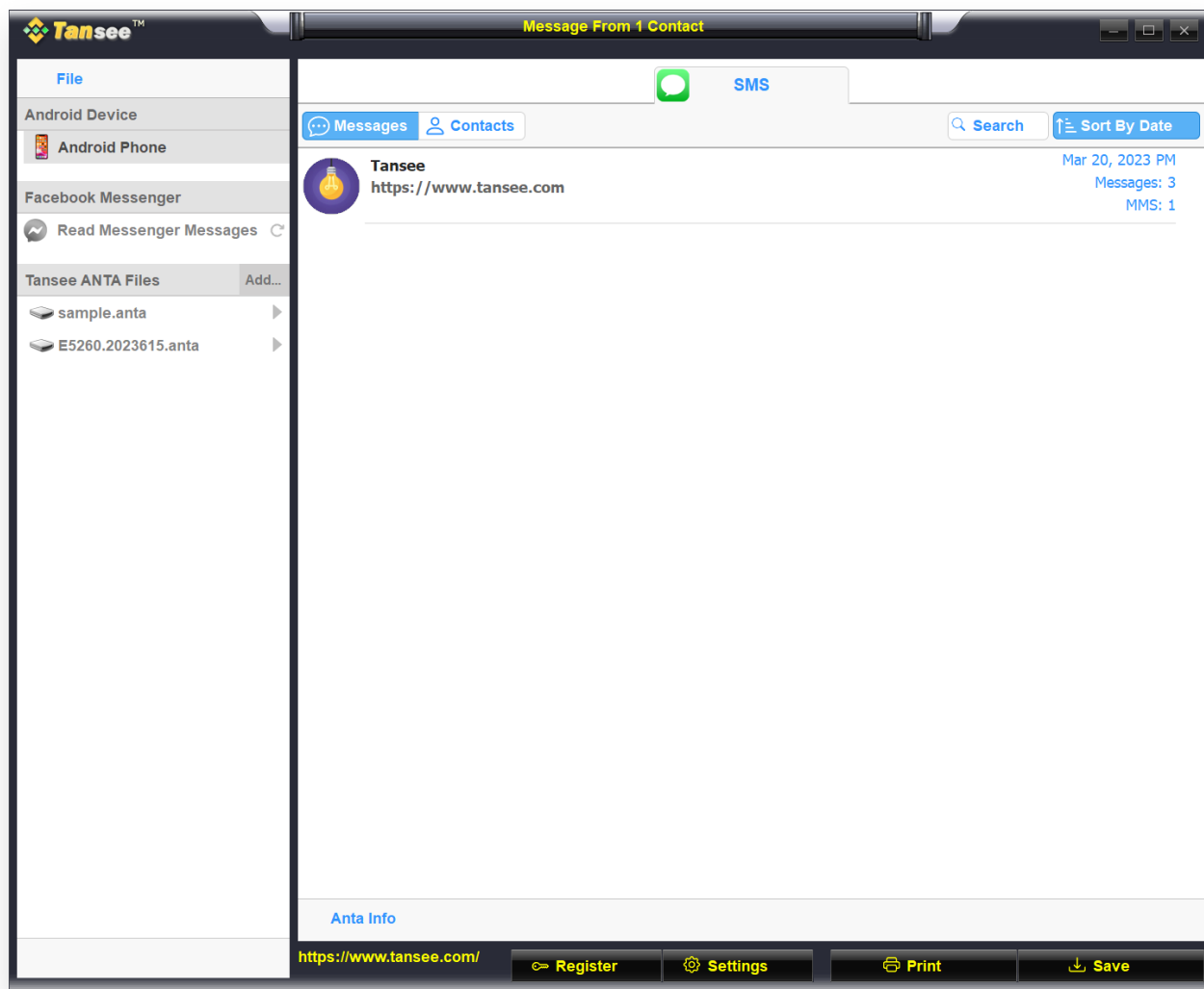
**Note:** Please keep android screen on while transferring data.



6

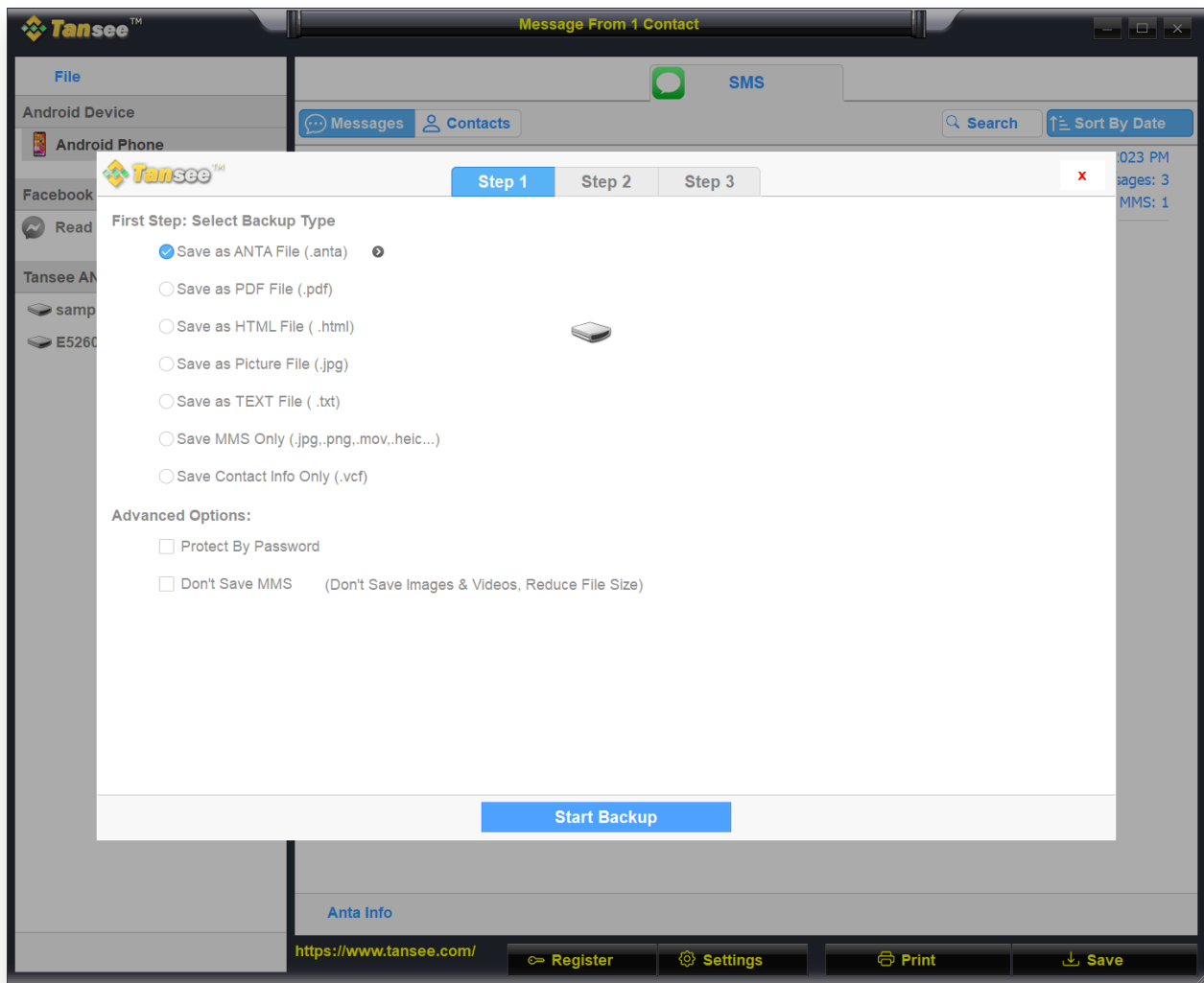
**Tansee program will display all messages.**

Loading Messages

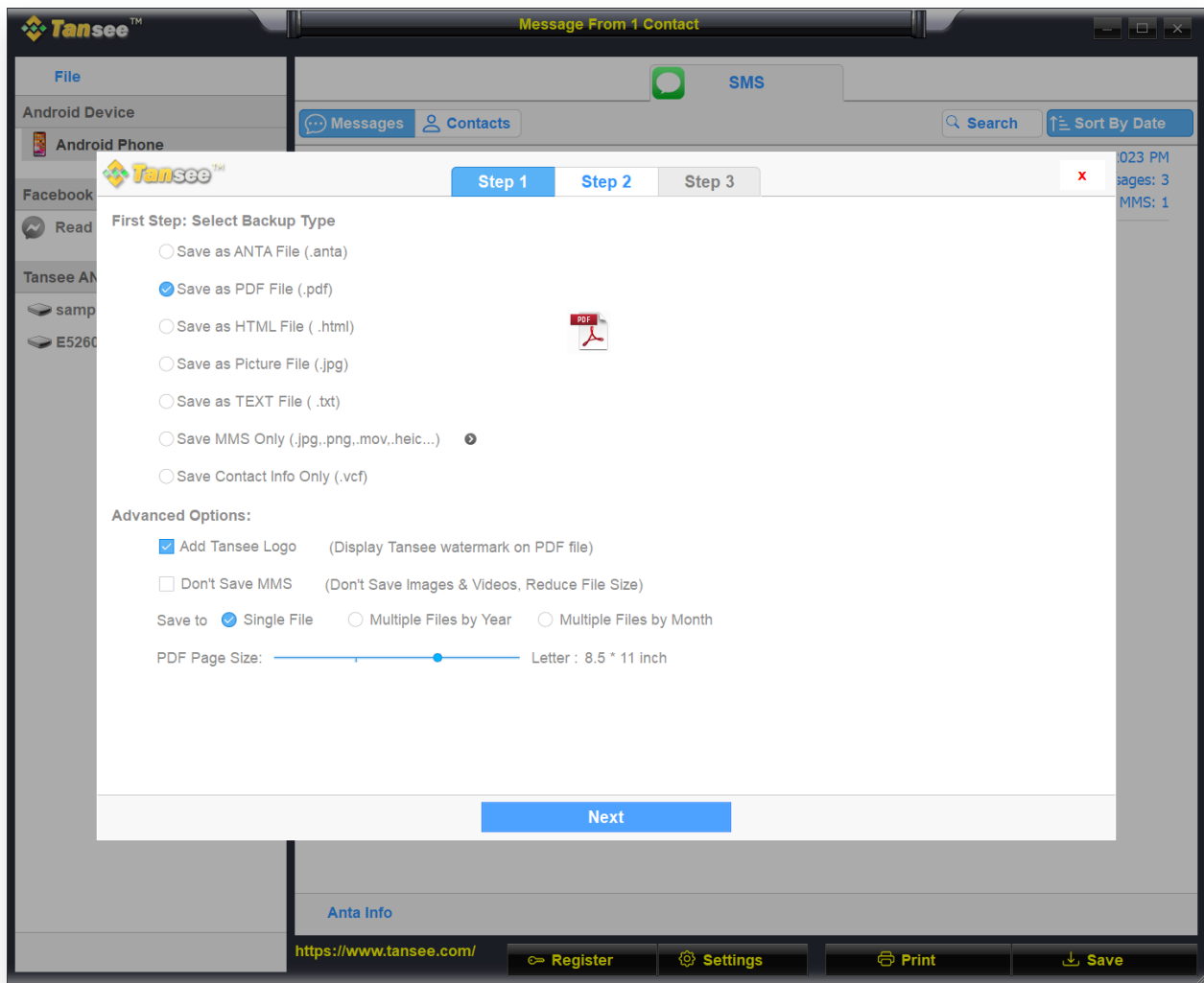


Messages Loaded

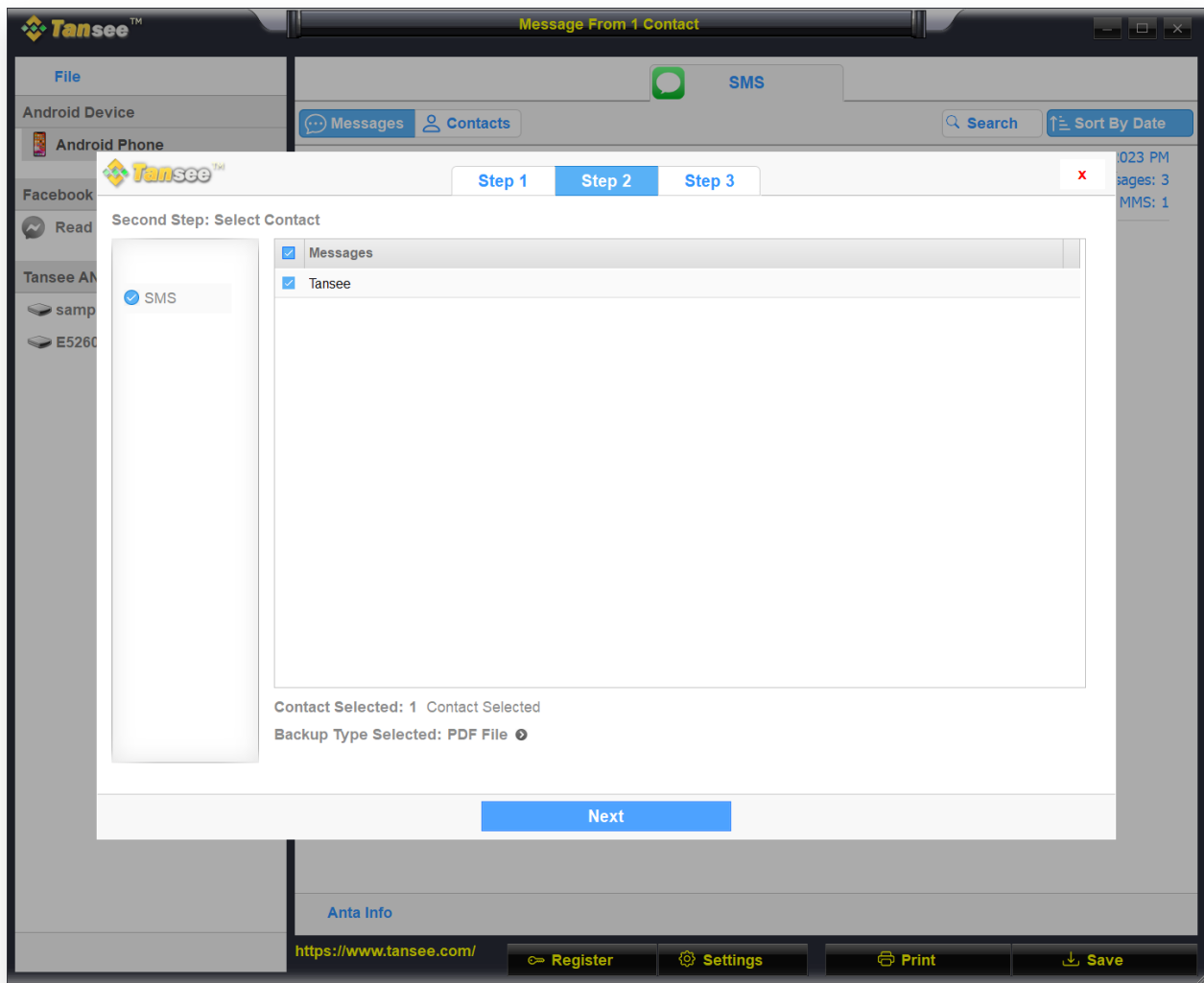
- 7 Click the button labeled 'Save' located at the bottom of the screen. Choose File type. Click 'Save'.



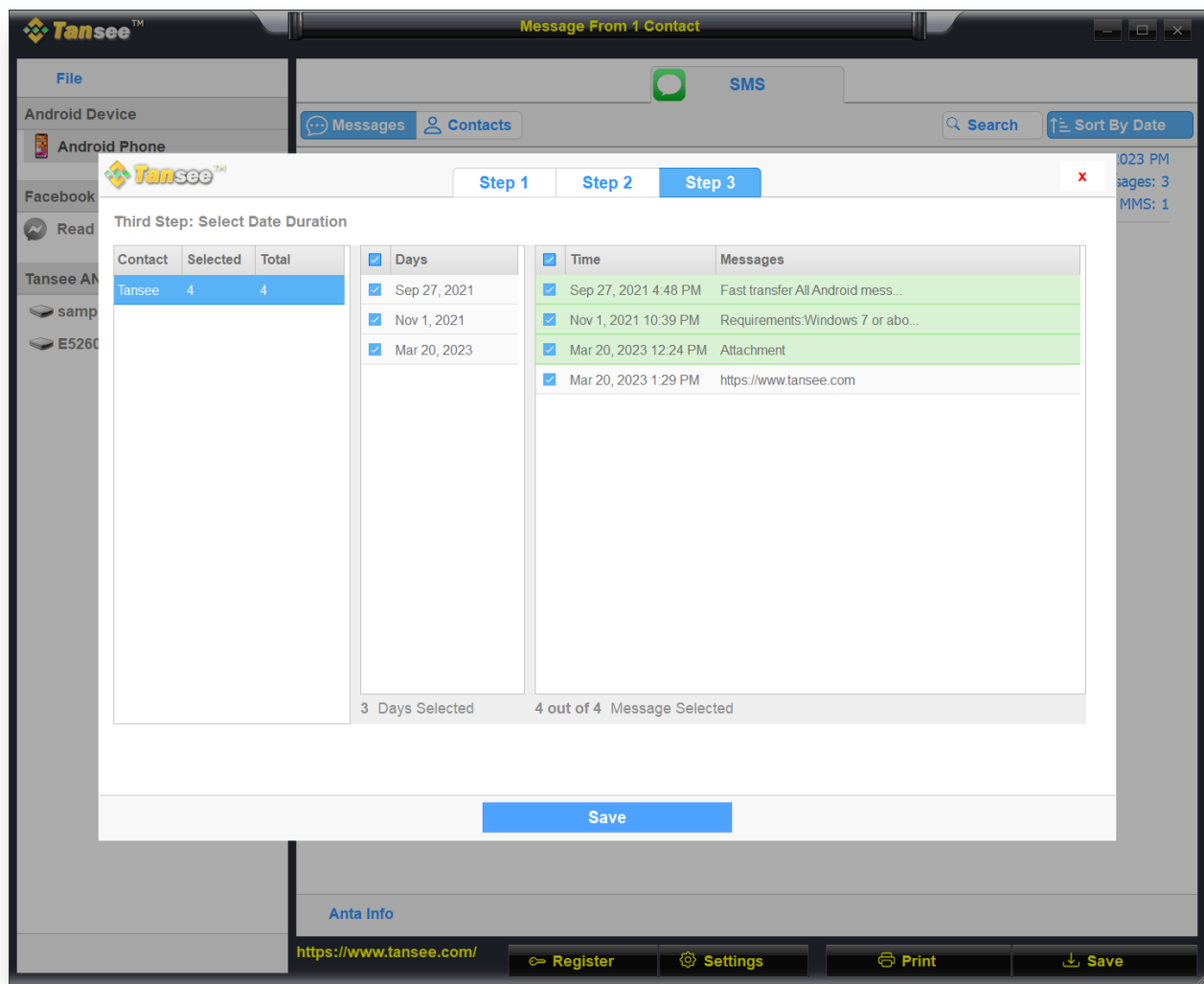
Save to ANTA file



Save to PDF file

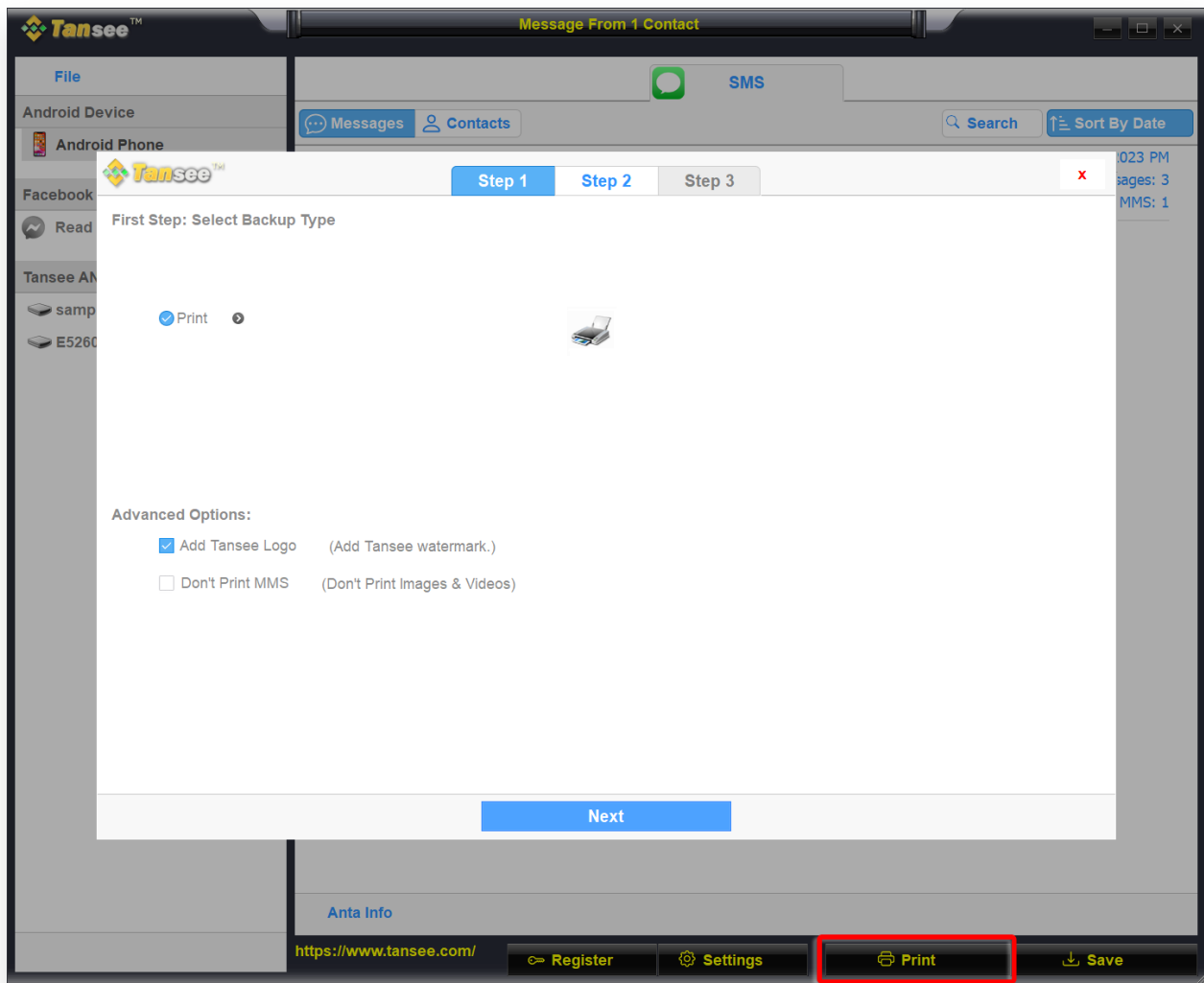


Save to PDF file



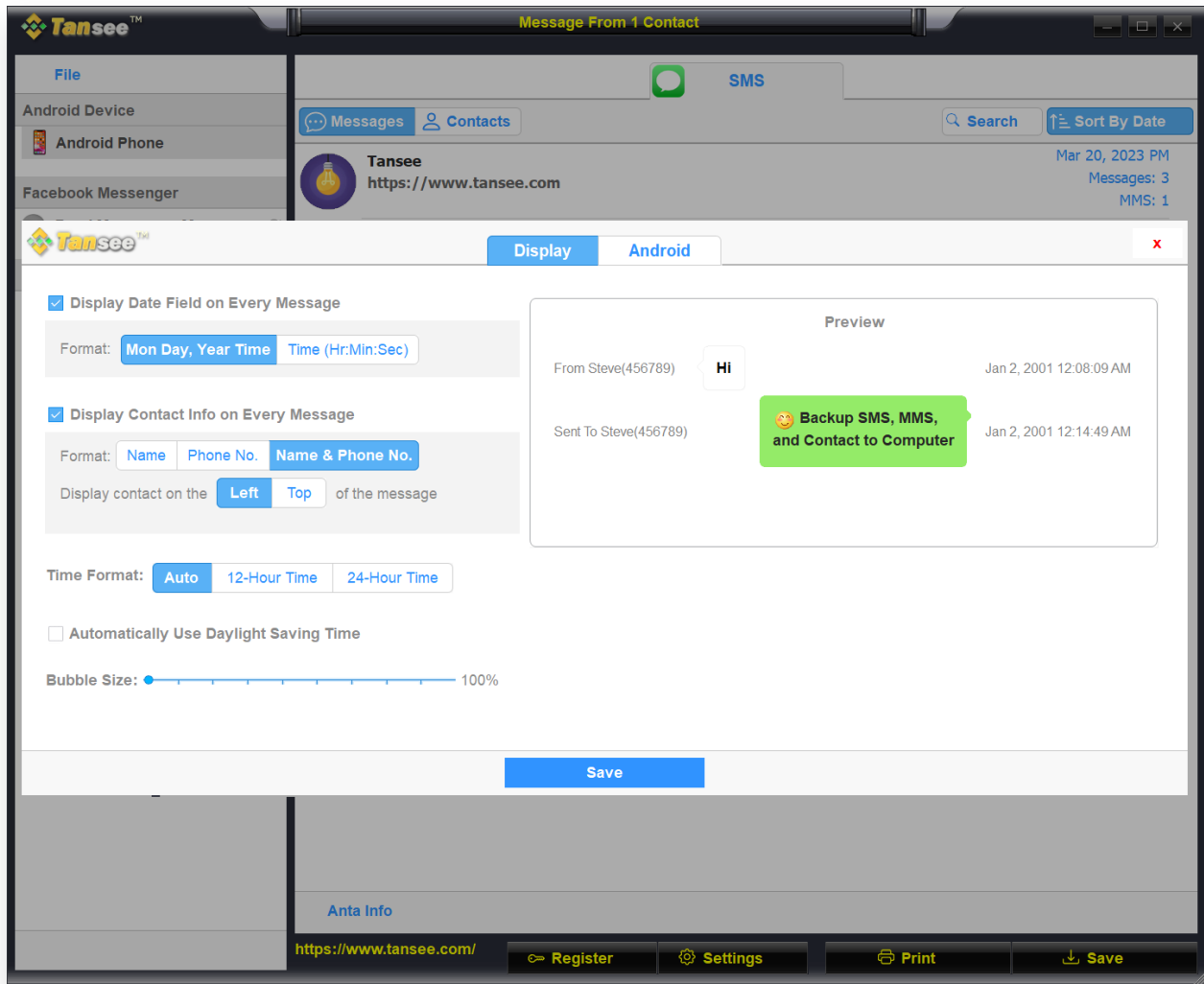
Click Save

- 8** Click 'Print' button. Click 'Start Print'. Print messages exactly as they appear on your Android Phone.

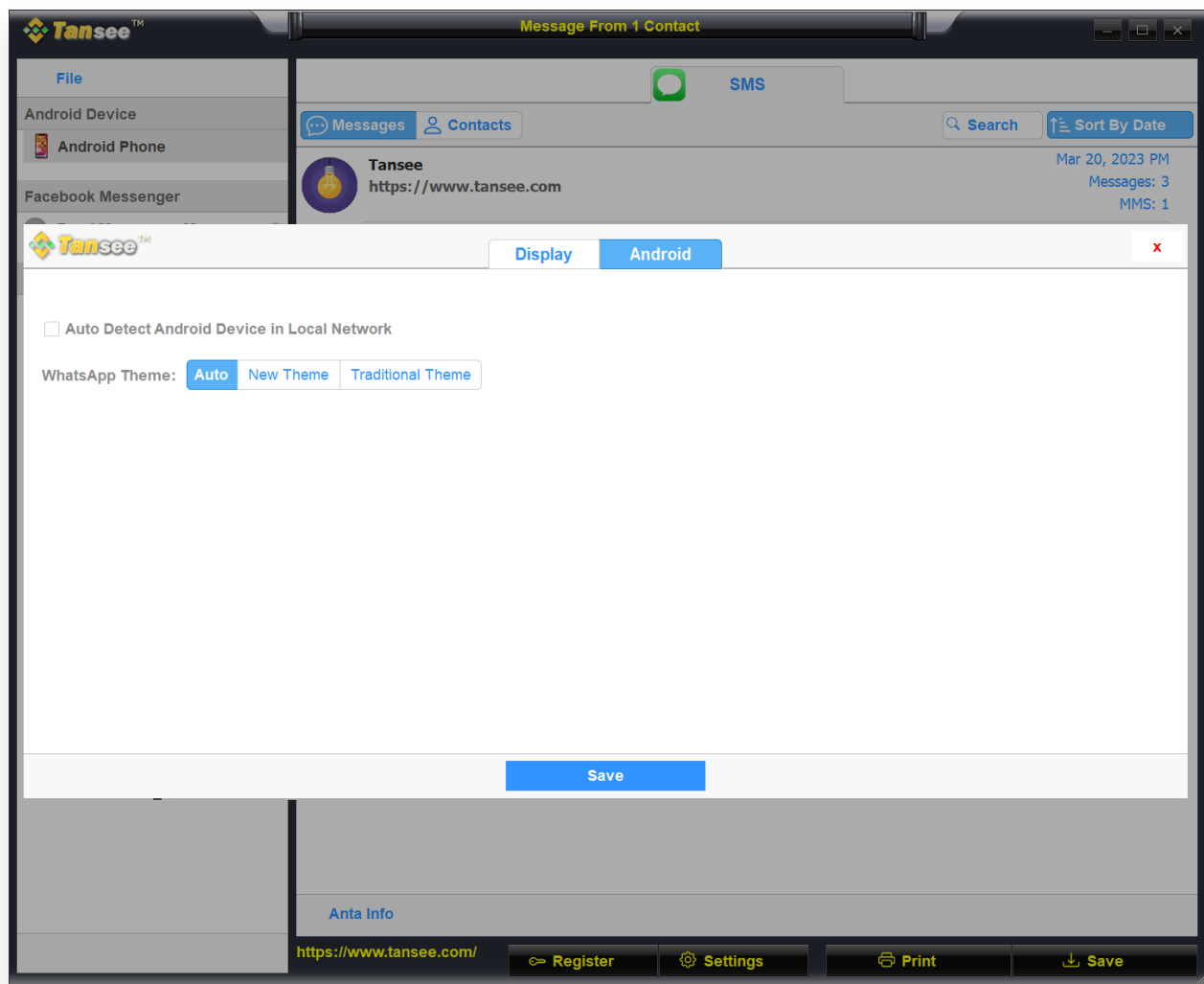


Print Messages with Date and Time

## 9 Android Message Settings



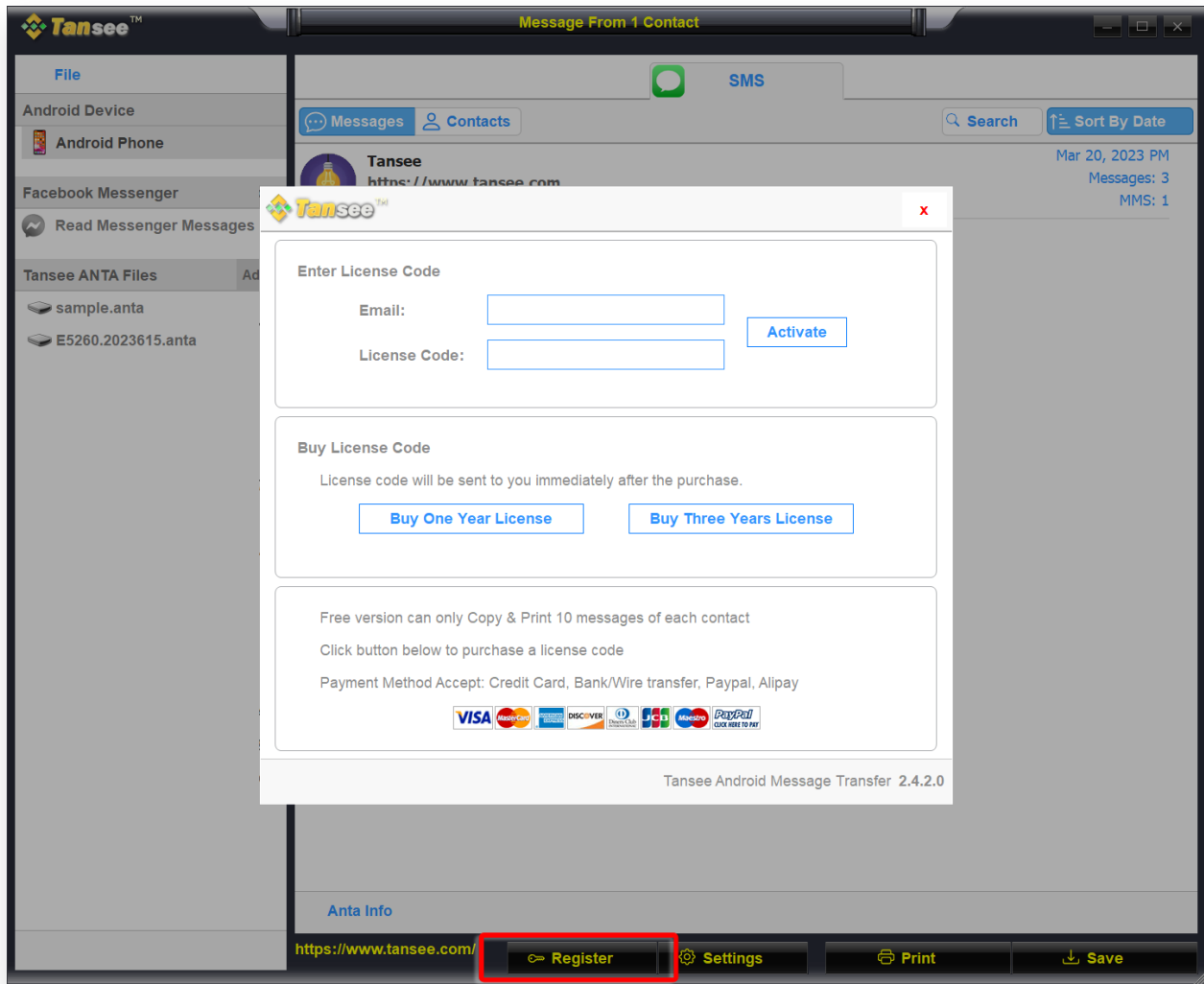
Android Message Settings Display



## Android Message Settings Android

10

**Click Register button and put in your license code to get full version.**



© 2006-2025 Tansee, Inc

[Home](#) [Support](#) [Privacy Policy](#)

[Affiliate](#) [Contact Us](#)